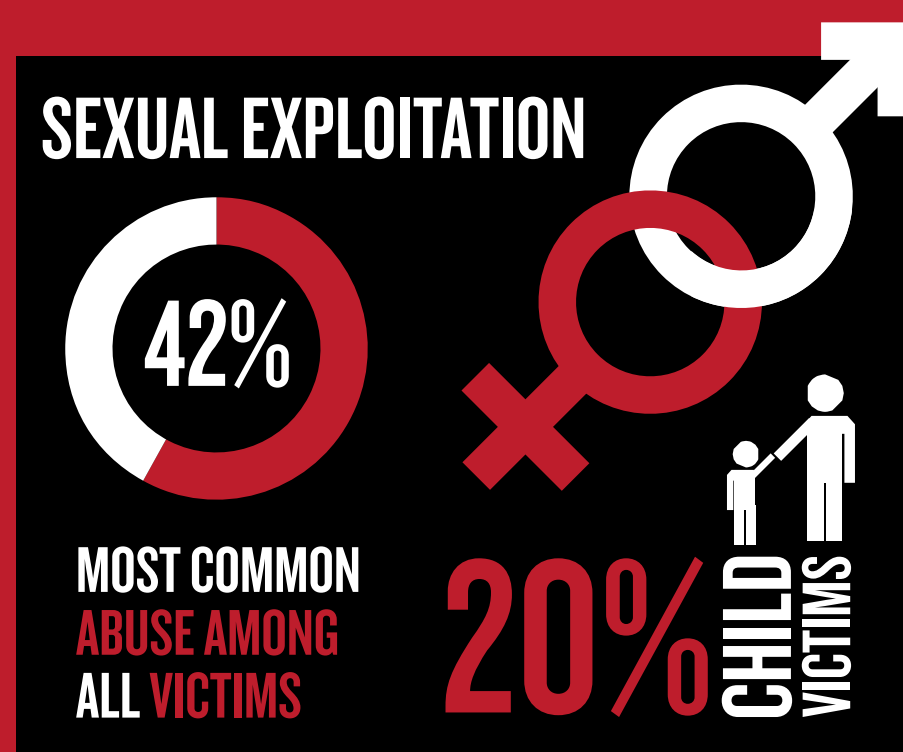


MODERN SLAVERY

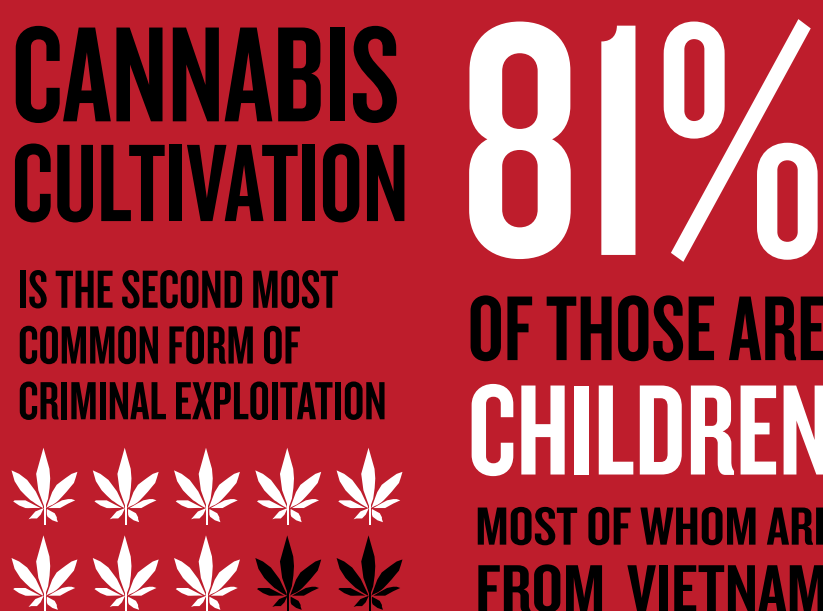
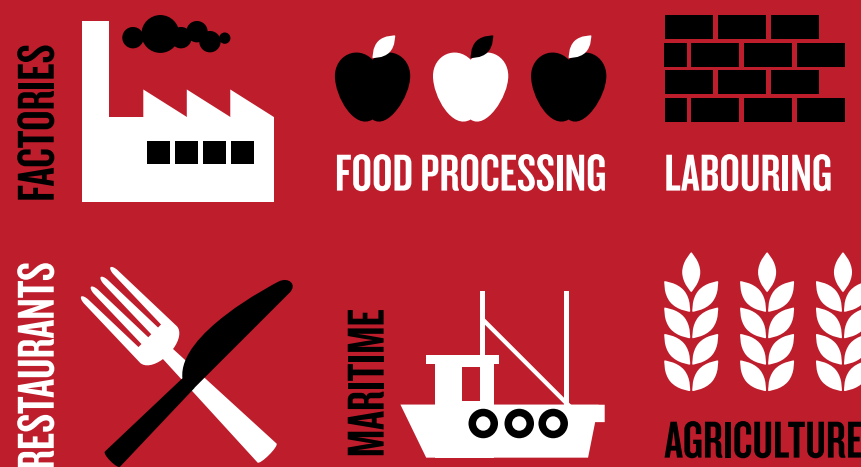
MODERN SLAVERY IS CLOSER THAN YOU THINK

Modern Slavery is the illegal exploitation of people for personal or commercial gain. Victims are trapped in servitude, which they were deceived or coerced into, and cannot leave.

MODERN SLAVERY INCLUDES:



COMMON AREAS OF LABOUR EXPLOITATION



WHERE VICTIMS COMMONLY COME FROM



Slavery is closer than you think. It happens all over the world including the UK. Find out more at modernslavery.co.uk or to seek help or report slavery call the helpline.

0800 0121 700

Calls are free from landlines and most mobile networks

Figures are drawn from National Referral Mechanism Statistics 2013 and UKHTC: A Strategic Assessment on the Nature and Scale of Human Trafficking in 2012, and refer to potential victims of human trafficking.