



# Child Sexual Exploitation

## Developing the Local Response

Bally Raju - LLR CSE Coordinator  
Donna Smalley – LLR CSE Service Manager  
October 2017

# Definition

*Child sexual exploitation is a form of child sexual abuse. It occurs where an individual or group takes advantage of an imbalance of power to coerce, manipulate or deceive a child or young person under the age of 18 into sexual activity (a) in exchange for something the victim needs or wants, and/or (b) for the financial advantage or increased status of the perpetrator or facilitator. The victim may have been sexually exploited even if the sexual activity appears consensual. Child sexual exploitation does not always involve physical contact; it can also occur through the use of technology*

(Revised definition February 2017)

# National Response

- Tackling CSE Progress Report – February 2017
- £millions invested to tackle child sexual abuse and CSE;
  - Strengthen support and recovery service
  - Increase resources to the criminal justice system
  - Launch of the Centre of Expertise on Child Sexual abuse
  - NWG CSE Response Unit launched July 2016

# Local Picture

- Increase in CSE referrals in Leicester, Leicestershire and Rutland (LLR) from 2014-2016
- Predominant CSE models - online, party and boyfriend/girlfriend
- Affects all children –significant number not known to statutory services/early help
- Girls account for majority of referrals
- Majority aged 13-16yrs but also affects older and younger children
- Majority of referrals for children of white ethnicity
- Children referred often have multiple health issues

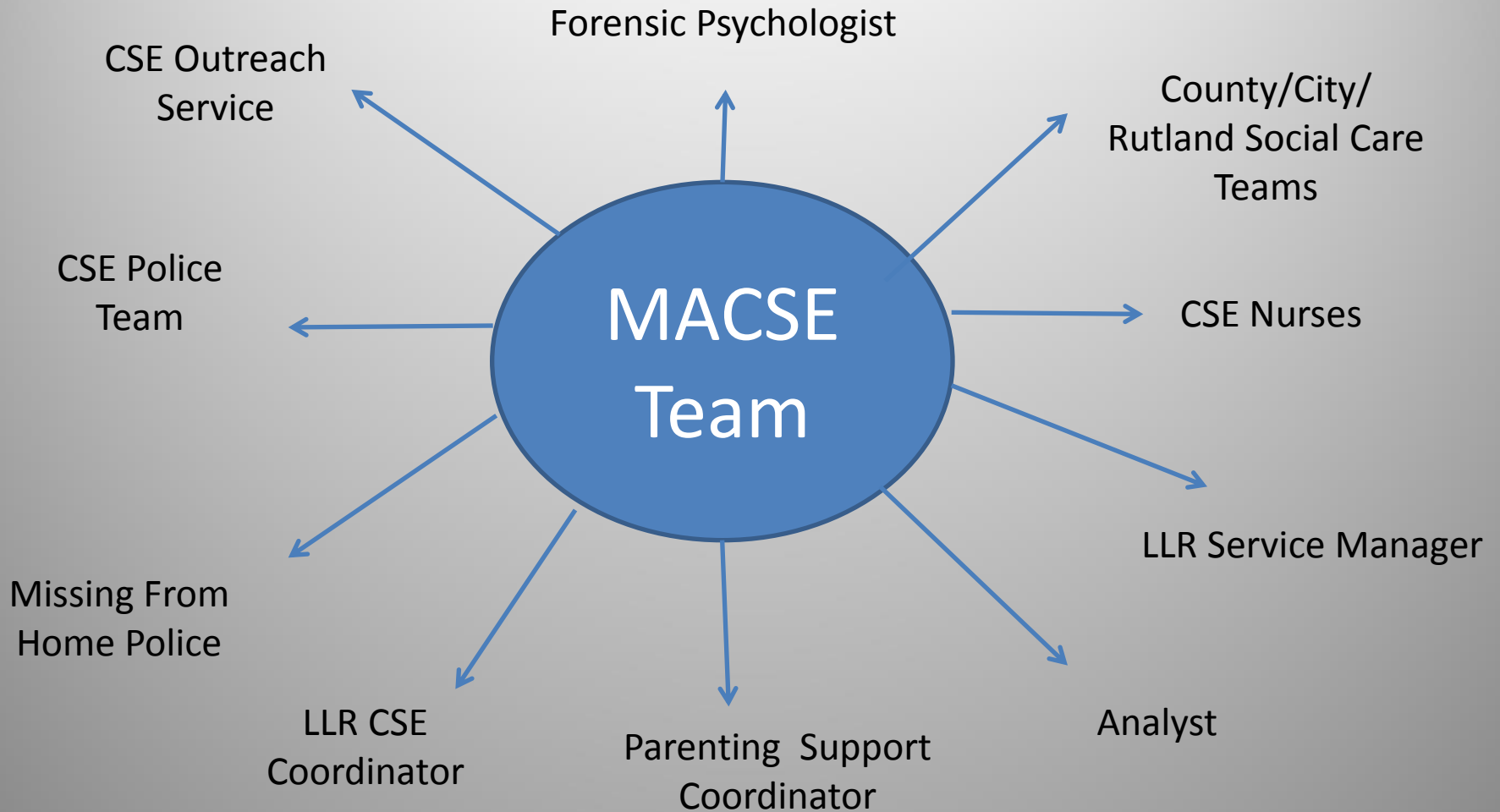
# Local Response

- Local strategy sets out how LLR will take action to safeguard and protect children at risk of CSE, trafficking or going missing
- The LLR CSE, Missing and Trafficked Operations Group sets out in the local action plan how we will address the strategic priorities
- LLR Multi-agency CSE team, comprised of local authority staff, police and health
- Strategic Partnership Development Fund CSE Project (SPDF)

# SPDF CSE Project

- One-off and non-recurring projects as well as extending existing projects and good practice to prevent, identify and tackle CSE
- 12 separate projects within the bid including;
  - Faith and Communities CSE Champion Service operating as *'engage ME:engage you'*
  - Intelligence Development (analyst)
  - Forensic Psychologist
  - Specialist CSE Nurses
  - CEASE including Kayleigh's Love Story
  - School Prevention Activity
  - Parenting Support Coordinator

# Multi –agency CSE Team



# Vulnerabilities

- Living in a chaotic or dysfunctional household
- History of abuse
- Homelessness
- Recent bereavement
- Gang association
- Low self-esteem
- Living in residential care
- Young carer
- Unsure about or unable to disclose sexual orientation
- Lacking friends in same age group
- Attending school with others who are being exploited
- Disability



# Recognise the warning signs

- Repeat STI's, pregnancies, terminations, miscarriages
- Unexplained injuries
- Recurrent attendances to emergency department
- Repeat alcohol and/or drug use, self harm, eating disorder
- Challenging behaviour, anger, despair, sleep difficulties, depression
- Missing from home, care, school
- Inappropriate relationships e.g. older boyfriend/girlfriend, multiple unknown callers
- Secrecy with use of social digital media; phones, laptop
- Unexplained access to money, clothes, mobile phone

# In the words of a victim of CSE

*I am a teenager.*

*I was sexually exploited by a 40 year old man.*

*I started using cannabis when I was worried about my Mum's health and because my Dad didn't seem to care about me.*

*I tried MCat for the first time when out with some friends because they looked like they were having fun.*

*I started to do more MCat but it was expensive.*

*My behaviour changed and I started missing lessons at school.*

*My relationship at home became very difficult with mum.*

*There were inappropriate pictures of me on Facebook with an older man.*

*My Mum was told.*

*The pictures were reported to the Police and my case was referred to the MACSE Team.*

*I told the team that sex had happened during my time at the man's house. The sex performed had been instead of payment for MCat.*

*They said this was abuse - I didn't agree.*

*I understand now that I was groomed and exploited.*

# CSE Intelligence

- ***Say Something if You See Something*** – all professionals and volunteers have a duty to protect children from sexual abuse and exploitation including through the sharing of **non-urgent information** to build intelligence;
- Suspicious activity in parks, fast food outlets, homes, hotels
- Complaints about house parties
- Vehicle details
- Details of suspected perpetrators including nicknames
- Third party information e.g. rumours or concerns about locations and people

# CSE Intelligence

- Share information via the **information sharing form** which goes directly to Leicestershire Police
- It is assessed, graded and linked to other reports daily
- Intelligence is used to enable proactive, targeted responses

Access the information sharing form via:

- <https://leics.police.uk/contact/community-partnership-information>

or through LSCBs websites:

- <http://www.lcitylscb.org/information-for-practitioners/safeguarding-topics/child-sexual-exploitation-cse-trafficking-missing/>
- <http://lrsb.org.uk/cse-information-sharing-form>

# What can you do?

- Ensure you refer to LLR SCB procedures – <http://llrscb.proceduresonline.com/index.htm>
- Ensure you are able to spot the signs of CSE
- Complete the CSE risk assessment tool and make a referral
- Ensure staff know which procedures to follow if they have concerns about a child?
- Share non-urgent information
- Identify trafficked children and refer to the National Referral Mechanism
- If you are unsure seek advice

# Contacts and Resources

## Children's social care

Leicester City Council, 0116 454 1004, [das.team@leicester.gov.uk](mailto:das.team@leicester.gov.uk)

Leicestershire County Council, 0116 305 0005, [childrensduty@leics.gov.uk](mailto:childrensduty@leics.gov.uk)

Rutland County Council, 01572 758407, [childrensduty@rutland.gcsx.gov.uk](mailto:childrensduty@rutland.gcsx.gov.uk)

## Resources

Leicestershire and Rutland Local Safeguarding Children Board (LSCB)

<http://lrsb.org.uk/cse>

[https://www.gov.uk/government/uploads/system/uploads/attachment\\_data/file/592588/Tackling\\_Child\\_Sexual\\_Exploitation\\_-\\_Progress\\_Report\\_web.pdf](https://www.gov.uk/government/uploads/system/uploads/attachment_data/file/592588/Tackling_Child_Sexual_Exploitation_-_Progress_Report_web.pdf)

<https://leics.police.uk/contact/community-partnership-information>

[https://www.gov.uk/government/uploads/system/uploads/attachment\\_data/file/591903/CSE\\_Guidance\\_Core\\_Document\\_13.02.2017.pdf](https://www.gov.uk/government/uploads/system/uploads/attachment_data/file/591903/CSE_Guidance_Core_Document_13.02.2017.pdf)